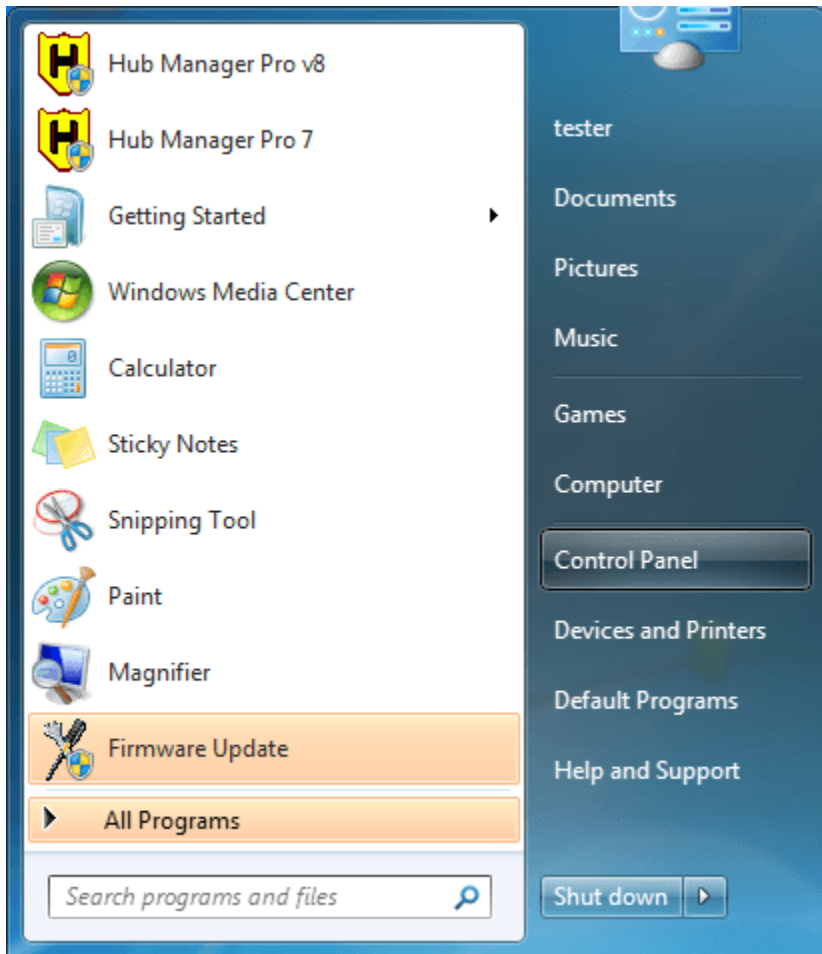


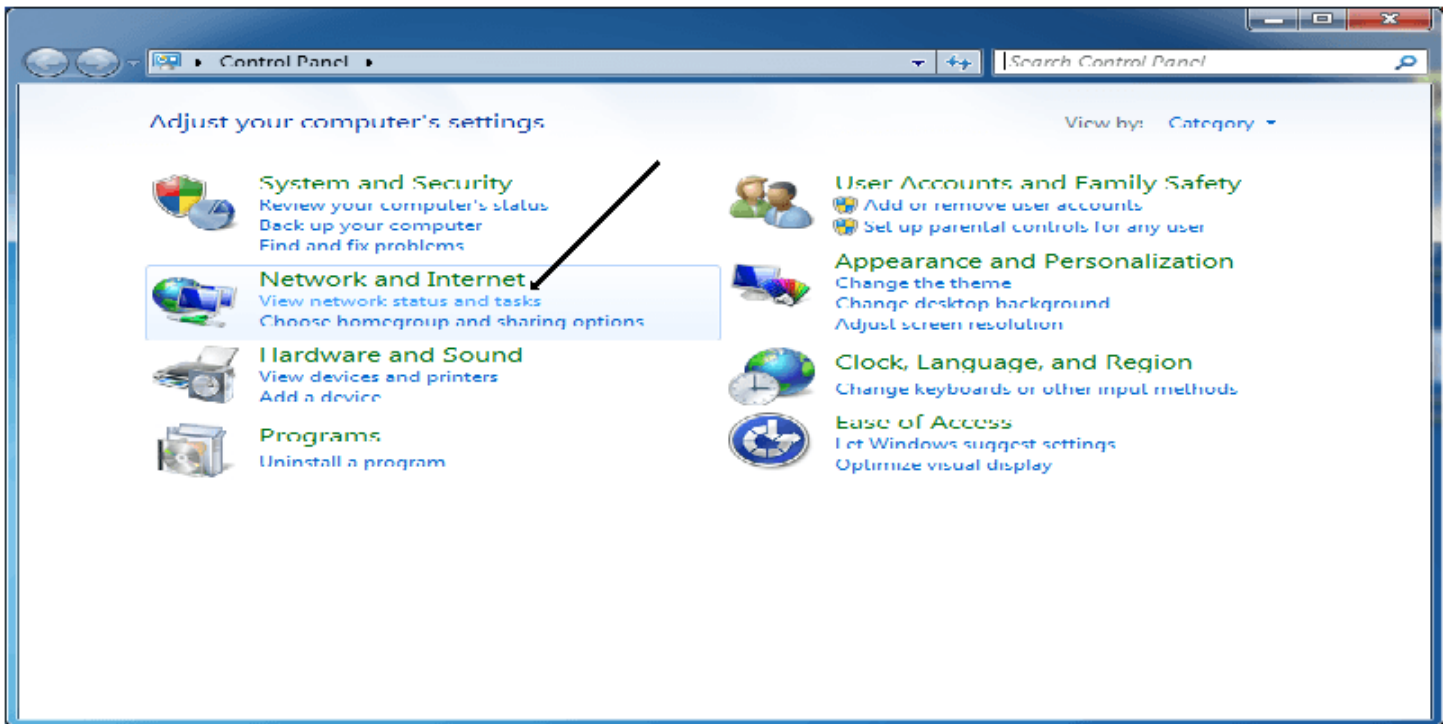
Create a Dialup Connection for the RE-1 and RE-2

Click the **Start** button

Click **Control Panel**



Under Network and Internet, click [View network status and tasks](#)



Click [Set up a new connection or network](#)

The screenshot shows the Windows Network and Sharing Center window. The title bar reads "Network and Internet" and "Network and Sharing Center". The main content area is titled "View your basic network information and set up connections". It displays a network diagram with three nodes: "WIN-GLQLR8GT3PE (This computer)", "Network", and "Internet". The "Network" node is connected to the computer, but the connection to the "Internet" node is marked with a red 'X'. Below the diagram, it says "View your active networks" and "Connect or disconnect". A "Network" icon is shown with the text "Network Work network". To the right, it indicates "Access type: No Internet access" and "Connections: Local Area Connection". Under the heading "Change your networking settings", there are four options: "Set up a new connection or network" (with a plus icon), "Connect to a network" (with a plus icon), "Choose homegroup and sharing options" (with a globe icon), and "Troubleshoot problems" (with a gear icon). A black arrow points from the "Set up a new connection or network" link to the "Change your networking settings" heading. On the left side of the window, there is a sidebar with "Control Panel Home" and "Change adapter settings", "Change advanced sharing settings", and "See also" with links for "HomeGroup", "Internet Options", and "Windows Firewall".

Control Panel Home

Change adapter settings

Change advanced sharing settings

See also

HomeGroup

Internet Options

Windows Firewall

View your basic network information and set up connections

WIN-GLQLR8GT3PE (This computer) Network Internet

View your active networks Connect or disconnect

Network Work network

Access type: No Internet access

Connections: Local Area Connection

Change your networking settings

[Set up a new connection or network](#)

Set up a wireless, broadband, dial-up, ad hoc, or VPN connection; or set up a router or access point.

[Connect to a network](#)

Connect or reconnect to a wireless, wired, dial-up, or VPN network connection.

[Choose homegroup and sharing options](#)

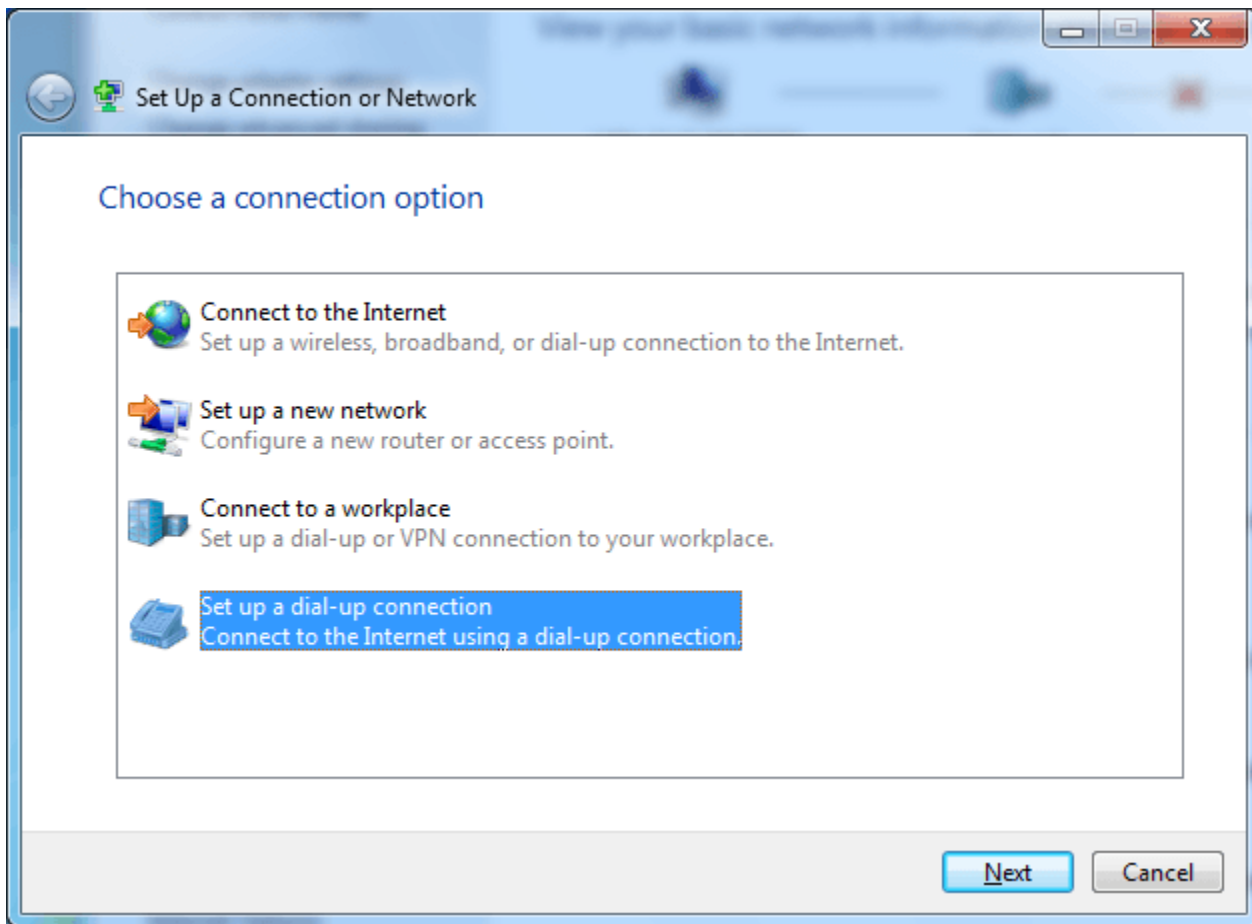
Access files and printers located on other network computers, or change sharing settings.

[Troubleshoot problems](#)

Diagnose and repair network problems, or get troubleshooting information.

Click Set up a dial-up connection

Click **N**ext



Enter the required data and click **C**onnect

Create a Dial-up Connection

Type the information from your Internet service provider (ISP)

Dial-up phone number: [Phone number your ISP gave you] [Dialing Rules](#)

User name: Linear

Password: 123456

Show characters

Remember this password

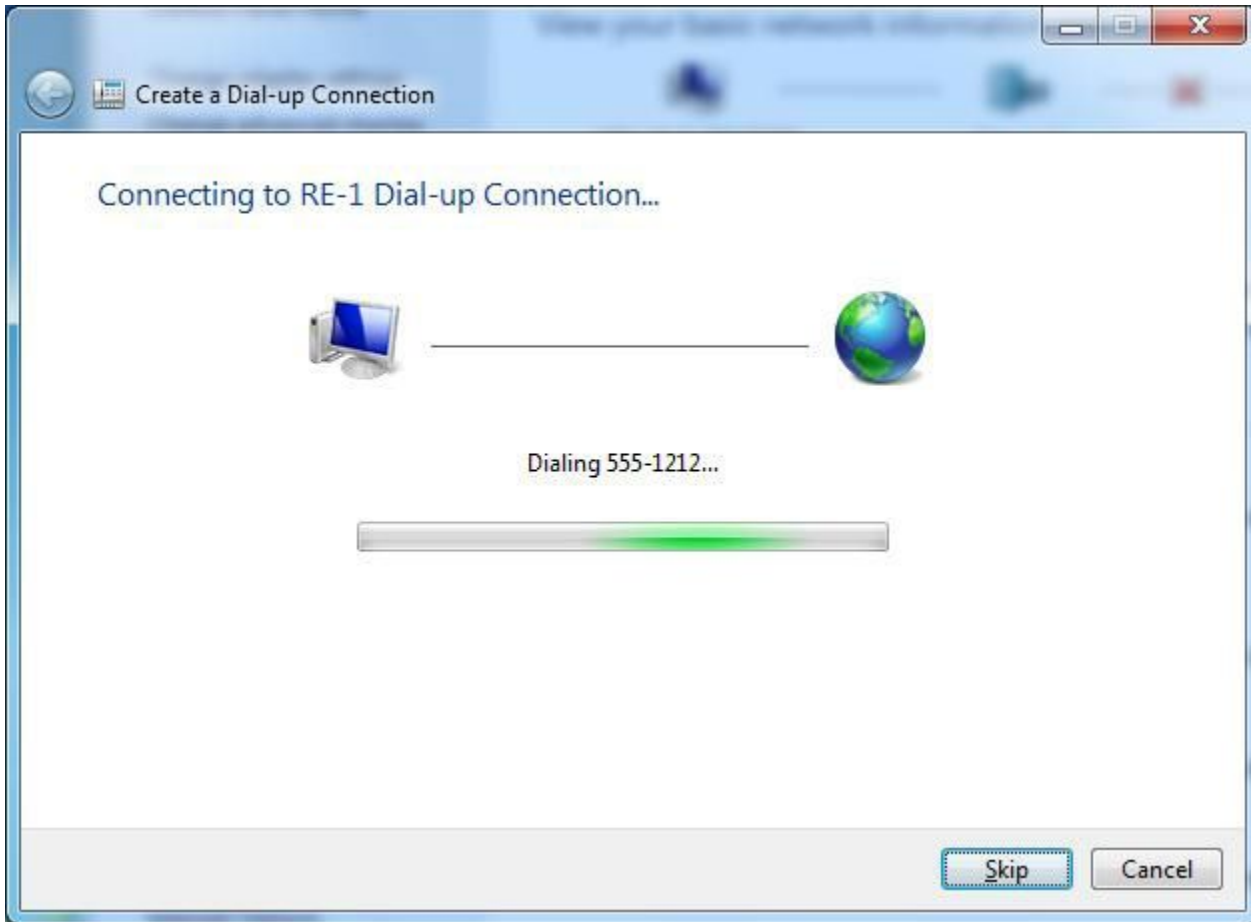
Connection name: RE-1 Dial-up Connection

Allow other people to use this connection
This option allows anyone with access to this computer to use this connection.

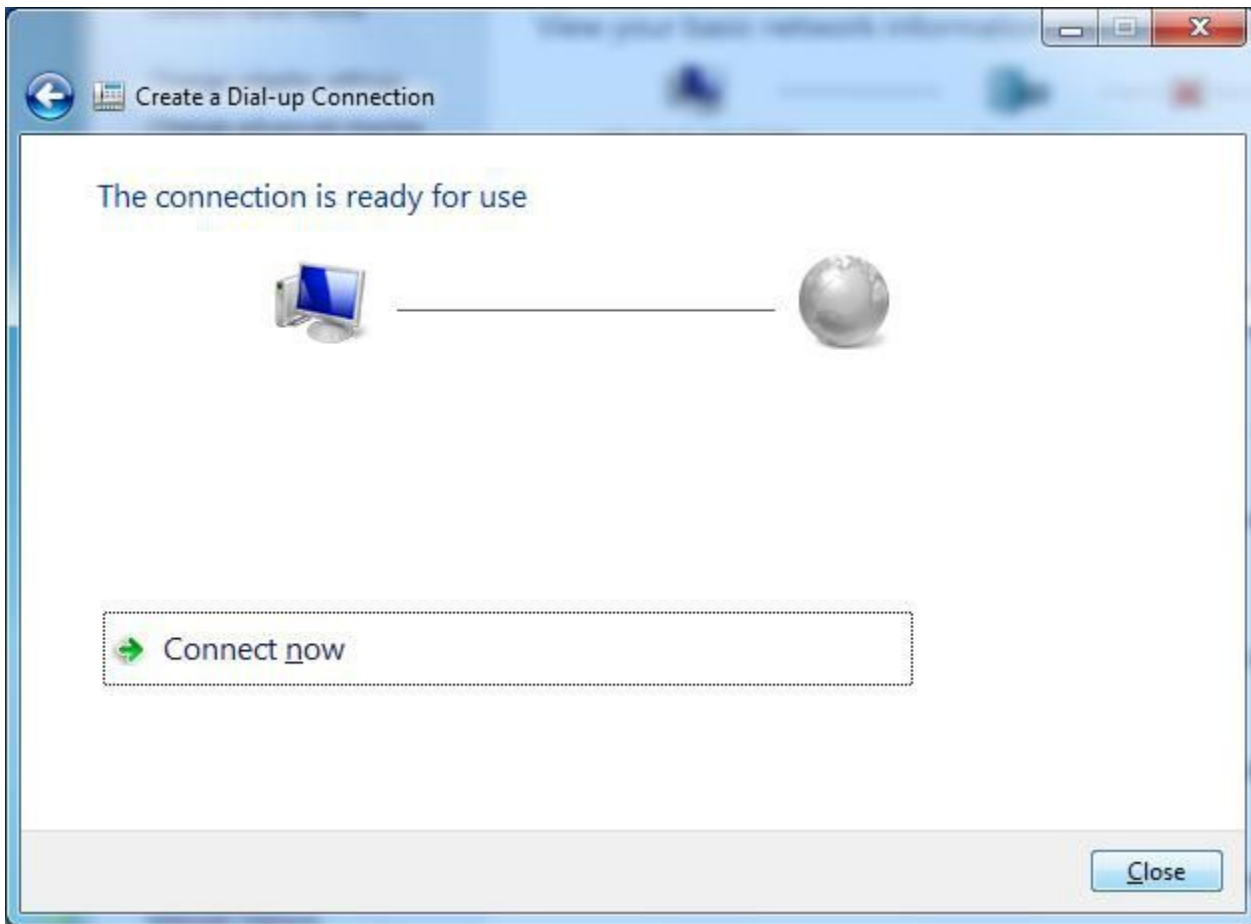
[I don't have an ISP](#)

Connect Cancel

Click **Skip**



Click **C**lose



Click [Change adapter settings](#)

The screenshot shows the Windows Network and Sharing Center control panel window. The title bar reads "Network and Internet" and "Network and Sharing Center". The address bar contains "Search Control Panel". On the left sidebar, there are links for "Control Panel Home", "Change adapter settings" (highlighted with a black arrow), and "Change advanced sharing settings". The main content area is titled "View your basic network information and set up connections" and includes a "See full map" link. Below this is a network diagram showing "WIN-GQLR8GT3PE (This computer)" connected to "Network", which is connected to "Internet" (indicated by a red X). A "View your active networks" section shows a "Network" icon labeled "Work network" with details: "Access type: No Internet access" and "Connections: Local Area Connection". A "Change your networking settings" section lists four options: "Set up a new connection or network", "Connect to a network", "Choose homegroup and sharing options", and "Troubleshoot problems". A "See also" section at the bottom left lists "HomeGroup", "Internet Options", and "Windows Firewall".

Control Panel Home

[Change adapter settings](#)

Change advanced sharing settings

View your basic network information and set up connections

See full map

WIN-GQLR8GT3PE (This computer) Network Internet

View your active networks [Connect or disconnect](#)

Network
Work network

Access type: No Internet access
Connections: Local Area Connection

Change your networking settings

- [Set up a new connection or network](#)
Set up a wireless, broadband, dial-up, ad hoc, or VPN connection; or set up a router or access point.
- [Connect to a network](#)
Connect or reconnect to a wireless, wired, dial-up, or VPN network connection.
- [Choose homegroup and sharing options](#)
Access files and printers located on other network computers, or change sharing settings.
- [Troubleshoot problems](#)
Diagnose and repair network problems, or get troubleshooting information.

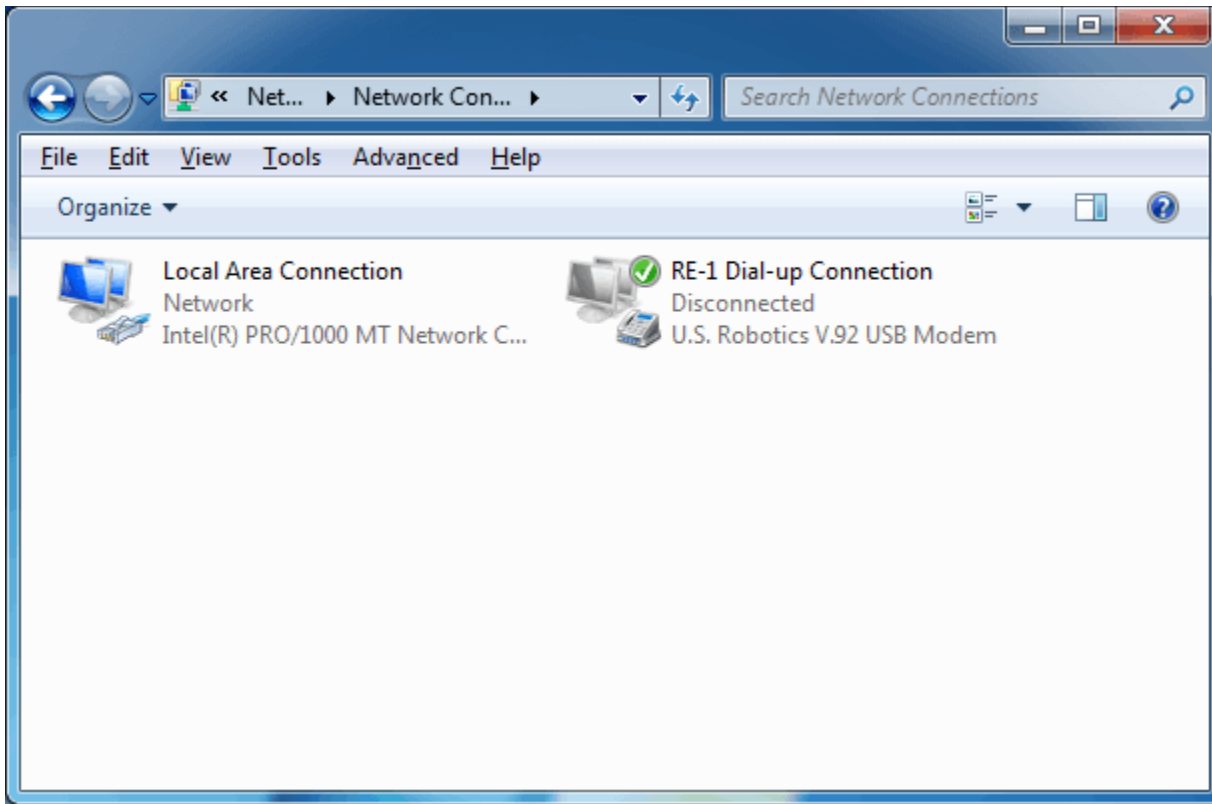
See also

- HomeGroup
- Internet Options
- Windows Firewall

Right-click on the RE-1 connection and drag it to the desktop

Click Create shortcut here

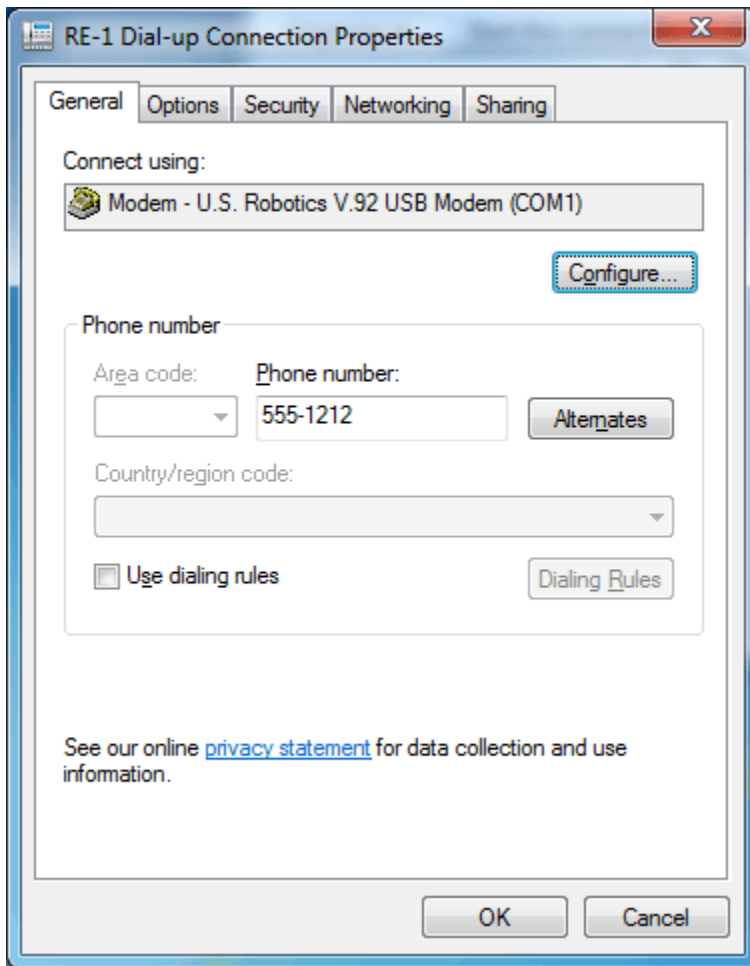
Double-click the shortcut to open the dialer



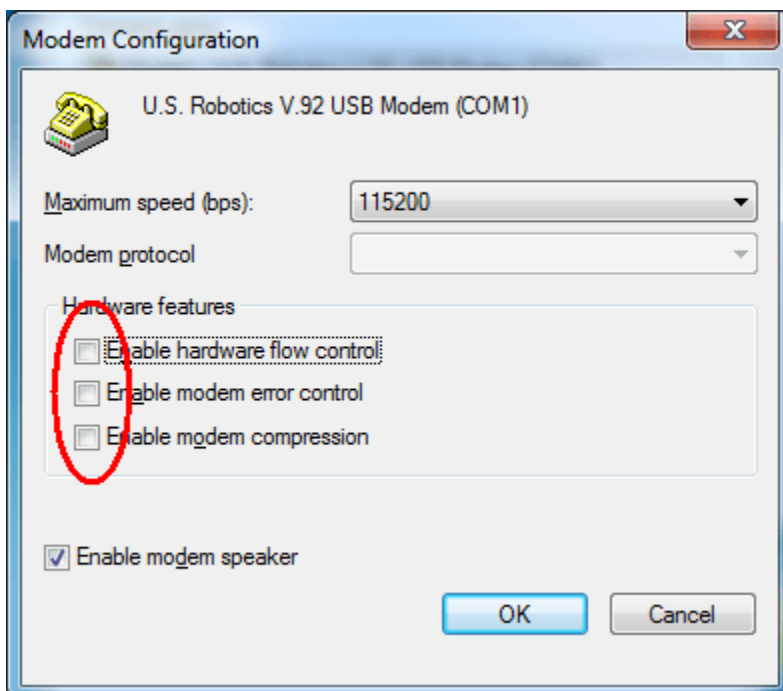
Click the **Properties** button



Click **Configure**



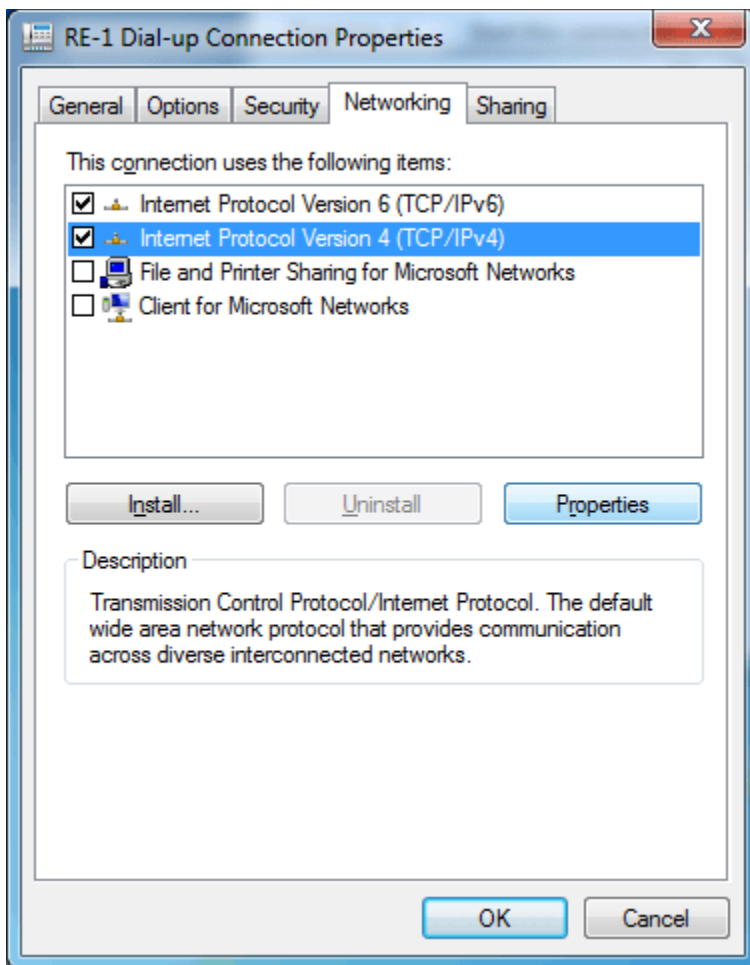
Uncheck the three boxes and click **OK**:



Click the Networking tab

Select Internet Protocol Version 4 (TCP/IPv4)

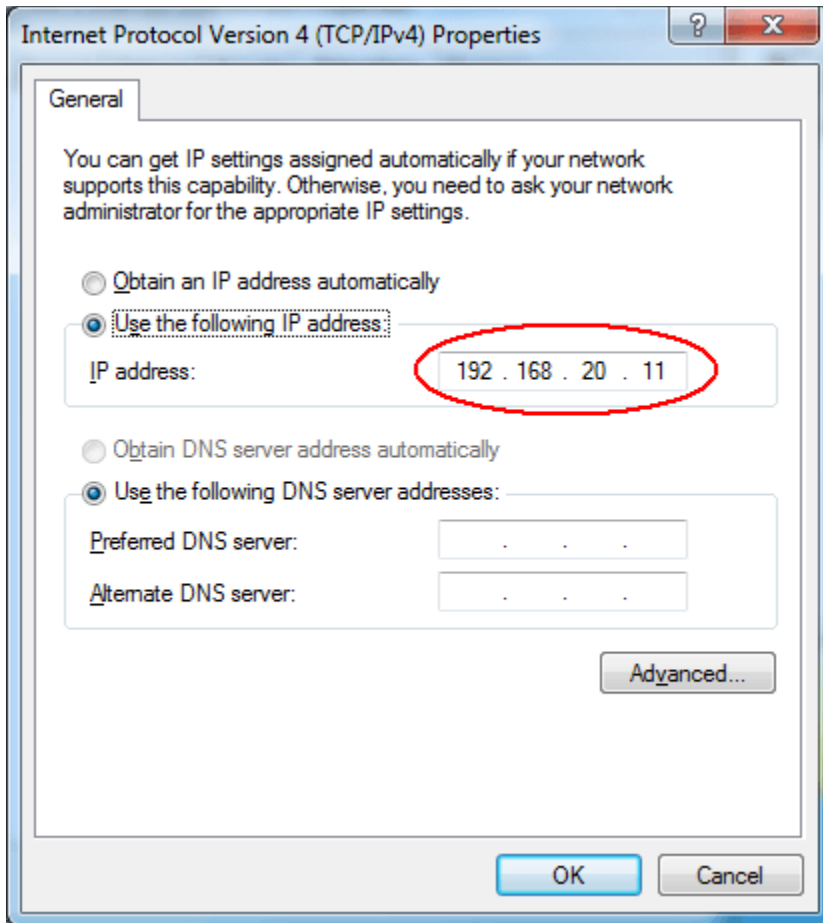
Click **Properties**



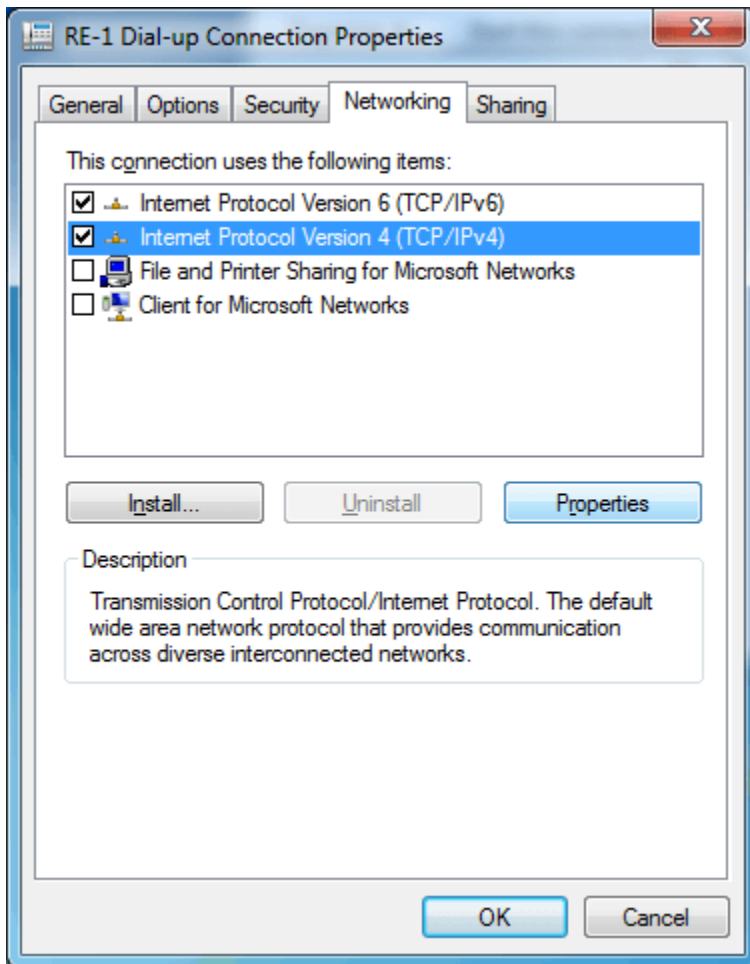
Click Use the following IP address

Enter the IP address

Click **OK**:



Click **OK**



Click **Dial** to connect to the panel

Connect RE-1 Dial-up Connection

User name: Linear

Password:

Save this user name and password for the following users:

Me only

Anyone who uses this computer

Dial: 555-1212

Dial Cancel Properties Help

When done, click the yellow network icon at the right end of the Task Bar

Click the RE-1 connection link

Click Disconnect

